



■ METER DISTRIBUTION BOARD FOR DIRECT METERING, INDOOR MOUNTING

Type	Order numbers	Dimensions (mm) Width-High-Depth w h d	Measuring places		Circuit breaker or disconnector	Mounting
			No. of met. places	Current (A)		
MRT II/2 Z	701025667	500x1600x190	4	63	on demand	on wall
MRT II/2 Vg	701028667	500x1600x190	4	63	on demand	built in wall
MRT II/3 Z	701026667	750x1600x190	6	63	on demand	on wall
MRT II/3 Vg	701029667	750x1600x190	6	63	on demand	built in wall
MRT II/4 Z	701027667	1000x1600x190	8	63	on demand	on wall
MRT II/4 Vg	701030667	1000x1600x190	8	63	on demand	built in wall
MRT III/2 Z	701031667	500x2000x190	6	63	on demand	on wall
MRT III/2 Vg	701034667	500x2000x190	6	63	on demand	built in wall
MRT III/3 Z	701032667	750x2000x190	9	63	on demand	on wall
MRT III/3 Vg	701035667	750x2000x190	9	63	on demand	built in wall
MRT III/4 Z	701033667	1000x2000x190	12	63	on demand	on wall
MRT III/4Vg	701036667	1000x2000x190	12	63	on demand	built in wall

Meter distribution boards are used in LV networks, mostly for indoor mounting as self standing set on fundament, mounting on/in wall.

The distribution boards are made according to the standard EN 60439 and other norms that are pertaining to these types of cabinets.

Material: pickled steel sheet that is electrostatic painted with epoxy powder, with colour that is resistant to the external atmospheric influence. Standard shade in our use is RAL 7035 (other colours are available on request).

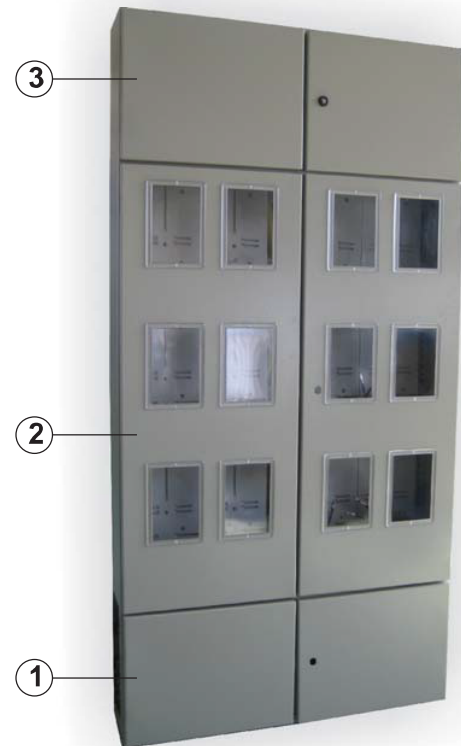
Degree of protection IP 43 according to EN 60529.

Meter boards are divided in 3 compartments:

- 1-Low compartment in which we place bus bars and circuit breakers,
- 2-Middle compartment in which we place meters.
- 3-Upper compartment in which we place fuses.



Special version of MRT III with diesel agregat section



The middle compartment can have 2 versions:

- MRT II - meters in two rows,
- MRT III - meters in three rows